

WC-52

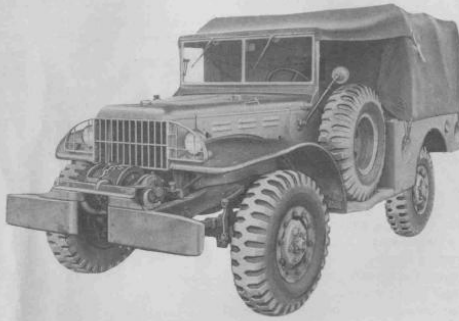
TM 9-2800

STANDARD MILITARY MOTOR VEHICLES

TRUCK, WEAPONS CARRIER, ¾-TON, 4 x 4

Technical Manuals: TM 9-808, TM 9-1808A, Parts List: SNL G-502
TM 9-1808B.

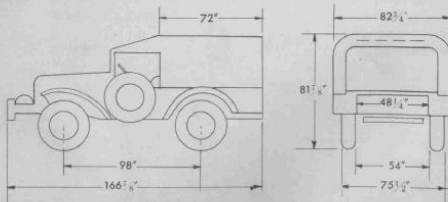
Manufacturer: Dodge Brothers Corp. (Div. of Chrysler Corp.)



RA PD 66555

Classification: Standard

Purpose: To transport weapons, tools and equipment.



172

TM 9-2800

SECTION VIII—TRUCKS

TRUCK, WEAPONS CARRIER, ¾-TON, 4 x 4

GENERAL DATA

Crew	2		
Weight	Net	(lb)	5,250*
	Payload	(lb)	1,500*
	Gross	(lb)	6,750*
Shipping dimensions	(cu ft) 529	(sq ft) 102	
Tires	Ply ... 8	Size ... 9.00 x 16	
Tread, center to center	(in.)	64 3/4	
Ground clearance	(in.)	10 5/8	
Electrical system	(volts)	6	
Capacities	Fuel, 70 octane gasoline	(gal)	30
	Cooling system	(qt)	18
	Crankcase (refill)	(qt)	5
Brakes	Hydraulic		

PERFORMANCE

Maximum gradability	(percent)	60
Turning radius	(ft)	22
Fording depth	(in.)	34
Angle of approach (deg) ... With winch 36 ... Without winch 53		
Angle of departure	(deg)	31
Fuel consumption, average conditions	(miles per gal)	8
Cruising range, average conditions	(miles)	240
Maximum allowable speed	(mph)	54
Number of speeds forward		4

ENGINE

Manufacturer	Dodge	Model T-214	
Type	In-line, 4 cycle	Number of cylinders	6
Displacement	(cu in.)	230.2	
Governed speed	(rpm)	3,200	
Brake horsepower		76	
Ignition type	Battery		

ADDITIONAL DATA

Winch capacity	(lb)	5,000
----------------------	------	-------

*Figures given are for vehicles without winch. For vehicles with winch use the following data:

Weight (lb) ... Net 5,550 ... Payload 1,500 ... Gross 7,050	
---	--

173



The Museum's 1942 WC-52 and 1942 Ben Hur 1-ton trailer



In background, M-2 Bradley Infantry Fighting Vehicle, and M-1 Abrahms Main Battle Tank



Colorado Rocky Mountain Rendezvous - July 1999 Cinnamon Pass - Elevation
12640 Feet



NOTE: In this picture, my WC-52 has 6.5" x 16" Power Wagon. / M-37 rims and 38 x 13 x 16 Super Swampers bias ply, tube type tires. They were replaced with correct combat rims and military non-directional tires.



**WC-52 in front of the Kempner POWER WAGON Museum displayed in
conjunction with the dedication of the World War II Memorial Dedication,
May 29, 2004**



Veterans Day, 2009

**The Museum's WC52 at the Dedication of the Veterans
Memorial at the Sylvia Tucker Memorial Park, City of
Kempner, Texas**



From the Left - Museum Owner, Paul F. Cook; World War II Veteran, Ben Bohmfalk,
and Colonel , Commanding Officer, 36th Engineer Brigade

The 36th Engineer Brigade provided manpower and equipment for building the City
Park where the Veterans Memorial is located. Their participation is through an Army
program to assist local communities while training soldiers in their Military
Occupational Specialties.

WC52 in Korea



**WC55 Approximately only 500 of this model
was produced.**

This is basically a WC 52 with a gun mount

**Chrysler (Dodge) Drawing dated March 18, 1942 showing some dimensions
of the WC-55 Gun Mount version.**

BODY BLDG DWG- 92516
S.E.Q-41950
EB-18462

